



ESE Manufacturing



Storage Systems

About ESE

ESE Manufacturing is a proudly South African racking and shelving company established in 1998, by Mr Stanley Aucamp. With over 25 years of experience in Materials Handling and Storage Systems, ESE Manufacturing has the expertise to solve any storage requirements. All our products are made from the best material available in South Africa, although our Head Office is based in Pretoria, we also provide our services to neighbouring countries.

ESE Manufacturing is a Level 2 BBBEE contributor.



Services

Whatever the size of your project, let us help you to make the most of your space.

Our storage experts are available now. We can digitally measure your desired space so that you can visualize the proposed storage solution as well as discuss your storage goals. You will then be provided with a free instant quote.

Our Services



- Site analysis
- Quotations
- CAD drawings
- Expert Installations
- Delivery / Customer Collections
- Dismantling / Relocations
- Racking Safety + Inspection
- Maintenance

Products



- Pallet Racking
- Pallet Live Storage
- Drive In Racking
- Push Back Racking
- Cantilever Racking
- Structural Supported Mezzanine Floor
- Racking Supported Mezzanine Floor
- Bolted Shelving
- Boltless Shelving
- Gondola Shelving
- Bins & Panels
- Steel Lockers
- Steel Cabinets
- Trolleys



Pallet Racking



- **ADVANTAGES:**

- Total control of your palletised stock
- Versatile and highly flexible for any load type in terms of weight and volume
- Able to store large quantities

It is uniquely designed for industrial warehouses with palletised products and a wide variety of stock keeping units. The racking configuration can be easily modified and extended to your specific needs. Useful accessories can be added to your application depending on your storage requirements – big or small. The most common racking configuration is multi-position storage with 2 – 4 pallets per bay. This is the most standard racking solution for pallets.



Pallet Live Storage

Live Pallet storage is the best form of warehouse organization. Best if you are storing goods with limited storage life as pallets that are stored first are also retrieved first FIFO (First In, First Out). Unlike block storage, pallet live storage permits constant stock rotation per lane



•**ADVANTAGES:**

- A clear logistical process
- Optimal use of warehouse space
- Solution for non-stackable pallets
- Constant stock rotation per lane
- Minimal rack damage
- Increased productivity

Drive In / Through Racking



Drive-In/Through Pallet Racking provides maximum storage capacity using the minimum amount of space. Drive-In/Through racking operates on the system of FILO (First In, Last Out) or FIFO (First In, First Out). It enables high-density storage in multiple horizontal and vertically arranged aisles. Ideal for storing large volumes of the same item, buffer storage or storing products with a long shelf life. It is a slower operating racking system.

- **ADVANTAGES:**

- High-density storage
- Ensures warehouse volume is used efficiently
- Ideal to store non-perishables



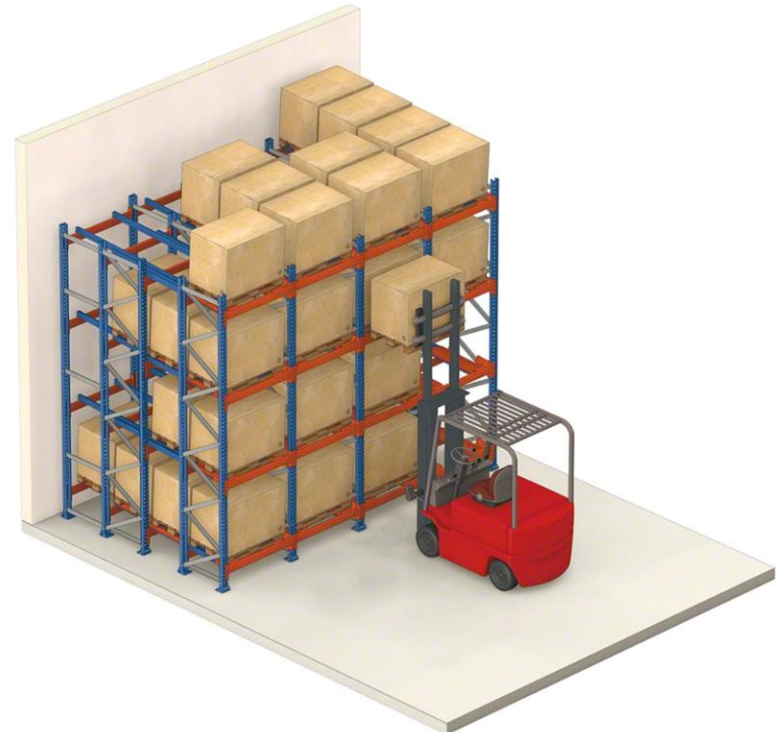
Push Back Racking



Pushback Racking is ideal for storing medium-turnover products, using the LIFO (or Last In, First Out) system. This bulk storage system allows up to 2 to 6 pallets deep to be stored on both sides of an aisle. A warehouse can gain 25% to 55% more storage space.

•**ADVANTAGES:**

- High-density storage
- Increased pallet storage capacity
- Each level can be used to store a different SKU
- Interlocking carts prevent dangerous jamming
- Faster pick rates
- The best possible use is made of the space available
- A clear logistical process
- Optimal use of warehouse space
- Solution for non-stackable pallets
- Minimal rack damage



Cantilever Racking

Cantilever racking systems are ideal for storing goods of various lengths, ideal for flat items such as steel plates, timber, plastic tubing & steel pipes. The rack consists of cantilever arms and can be configured with single-sided or double-sided designs. The cantilever arms can be modified and adjusted to various heights and loading requirements.



•**ADVANTAGES:**

- Well organised and visible storage
- Indoor and outdoor use
- Efficient use of warehouse space
- Versatile applications
- Easily accessible

Structural Supported Mezzanine Floor



Structural supported raised storage systems drastically increases your storage capacity by utilizing the full available volume in your warehouse.

A range of floor media is available ranging from open or closed steel floor panels to various timber products. Loading capacity of these systems ranges from 250kg per sqm to 1000kg per sqm, depending on the required application.

Access to these raised storage systems can vary from staircases, conveyors, pallet gates and automated lifts.



•**ADVANTAGES:**

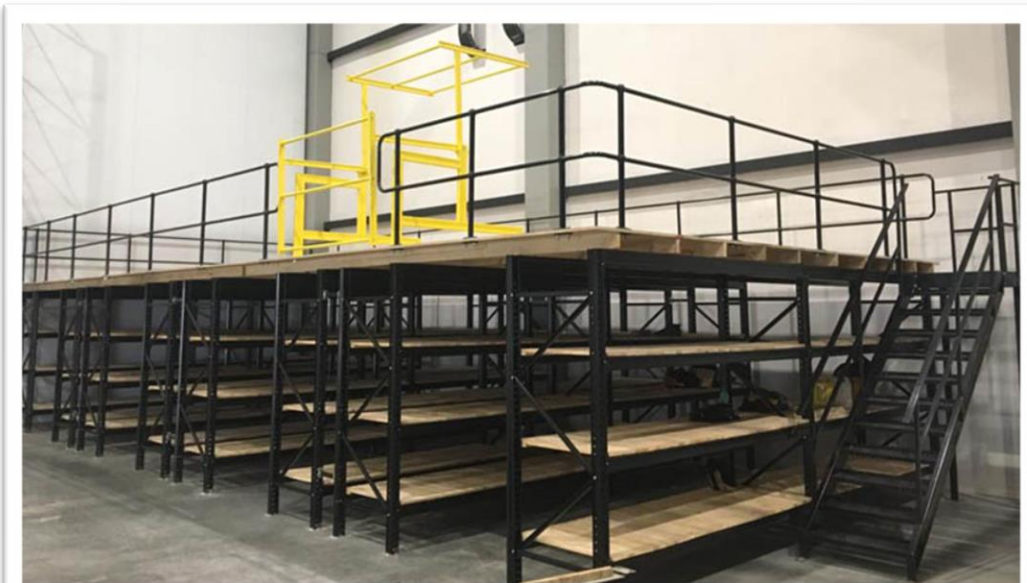
- Increased open operating area with minimum obstruction
- Less interruption during installation than conventional building construction
- Increases your current storage capacity
- Reduces your current per sqm rental cost
- Creates opportunity for easy stock control
- A totally free-standing structure that can be re-located.

Racking Supported Mezzanine Floor

Industrial Racking and Mini Racking supported raised storage systems drastically increases your storage capacity by utilizing the full available volume in your warehouse.

A range of floor media is available ranging from open or closed steel floor panels to various timber products.

Access to these raised storage systems can vary from staircases, conveyors, pallet gates and automated lifts.



•**ADVANTAGES:**

- Increases your current storage capacity
- Reduces your current per sqm rental cost
- Creates opportunity for easy stock control Racking Supported Mezzanine
- A totally free-standing structure that can be re-located

Mini Racking



Mini Rack is a cost-effective, light duty bolted system, ideal for smaller or bulkier, but lighter applications. It can carry up to 4 tons per bay and is available at a fraction of the cost of Racklock pallet racking, the construction and connections have the same advantages as Racklock.

•**ADVANTAGES:**

- A Cost-Effective Solution for storing products of a lighter nature
- Easily adjustable storage levels
- Various decking media available
- A user-friendly and light product to assemble



Bolted Shelving



Shelving systems are the most basic storage solution for smaller products of a much lighter nature.

Bolted Shelving systems are constructed via Angle Uprights and Shelves which are bolted to the Uprights.

This Bolted Shelving system can carry 100kg per shelf (UDL) and support a variety of accessories for various applications.

This system can be fitted with a variety of back and side panels from welded mesh to solid and perforated panels.

•**ADVANTAGES:**

- Ideal for small part and archive storage
- Can be converted to a multi-tier system
- This system also allows for various storage accessories such as:
 - back & side panel, dividers, bin fronts and pull out trays.
- Ideal for storing multiple product lines
- Increases your current storage capacity
- Creates opportunity for easy stock control.



Boltless Shelving



Shelving systems are the most basic storage solution for smaller products of a much lighter nature.

The Boltless Shelving system is constructed via Angle Uprights and Shelves that are connected to the Uprights with a fully boltless shelf connector clip.

This Boltless Shelving system can carry 80kg – 250kg per shelf (UDL) and support a variety of accessories for various applications.

This system can be fitted with a variety of back and side panels from welded mesh to solid and perforated panels.

•**ADVANTAGES:**

- No nuts & bolts required
- Increased strength
- Increased stability
- Easy adjustability of shelf levels
- Ideal for small part and archive storage
- Can be converted to a multi-tier system
- This system also allows for various storage accessories such as back & side panels, dividers, bin fronts and pull out trays.
- Ideal for storing multiple product lines
- Increases your current storage capacity



Gondola Shelving



Gondola shelving is a popular modern shop display shelving that offers retail outlets an opportunity to maximise retail space. It is a free-standing double-sided unit that doesn't need to be fixed to walls and has been designed with customer convenience in mind.



•**ADVANTAGES:**

- The gondola shelf system is one of the safest shelving options.
- It fits almost any store space
- You can maximize the shelf space.
- You can easily change the shelving as well as the hooks depending on the products.



Wire Mesh Products

Wire Shelving, as the name suggests, is manufactured from wire mesh. It is typically a freestanding structure, with 4 uprights or poles per shelf unit, and a varying number of wire mesh shelves which attach to the uprights using a simple clip-on mechanism (No bolts are involved).



Mobile Trolley



Cage Mobile Trolley



Bread Trolley

ADVANTAGES:

Wire mesh shelves have a myriad of safety benefits. Because of the size and lightness of wire mesh shelving, they improve sprinkler access and minimise fire risk. They are also free of sharp edges, so they don't scratch people or products, reducing the risk of injury and loss

Lockers

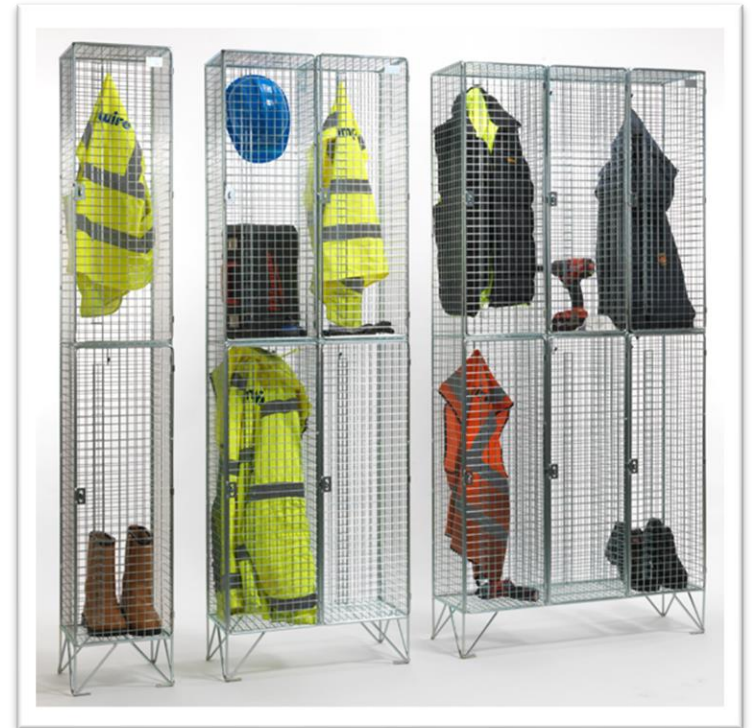
Steel Lockers

1800H x 300D x 450W



Wire Mesh Locker

1800H x 300D x 450W



Ladies Wardrobe

1800H x 520D x 790W



Lin Bins & Panels

Wall mounted panel



Stationery cabinet with bins



Free standing panel



Linbin Trolley



Merchandising Equipment



Folding Nose Trolley



Beer Crate Trolley



2 Tier Picking Trolley



3 Tier Picking Trolley

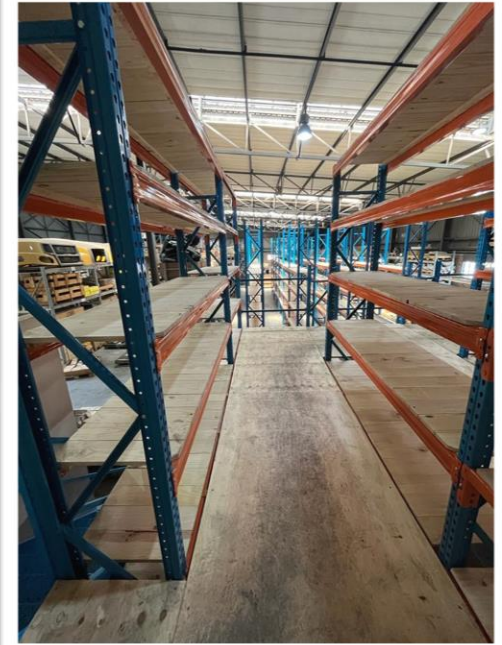


Platform Trolley

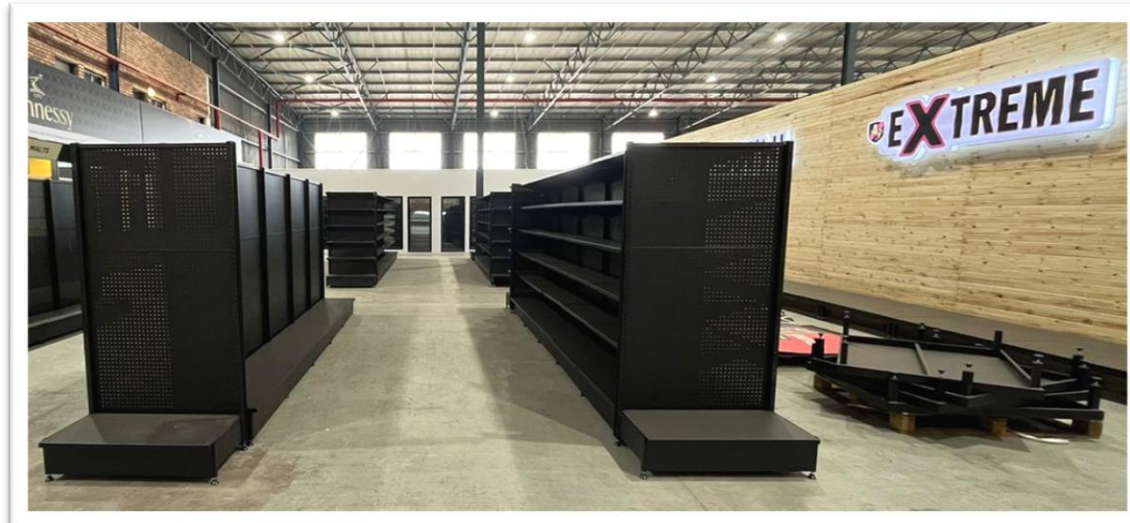
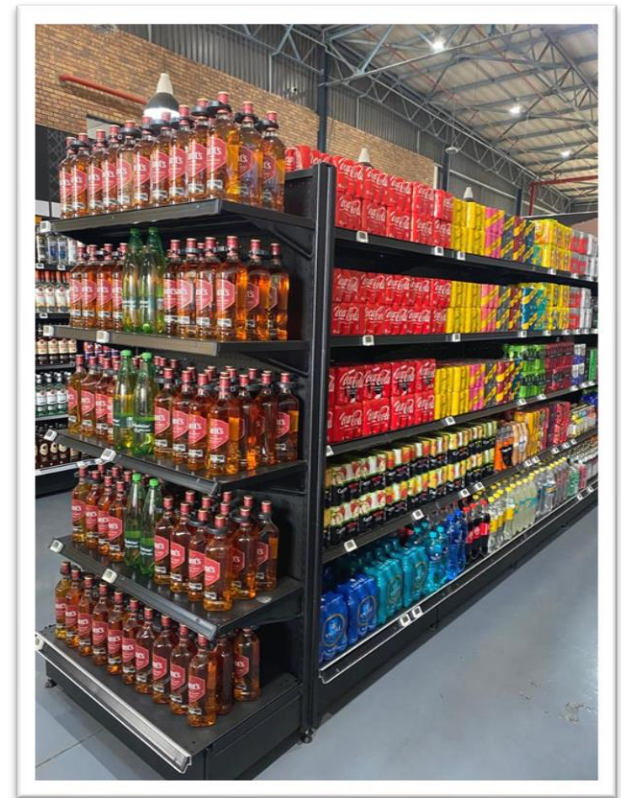
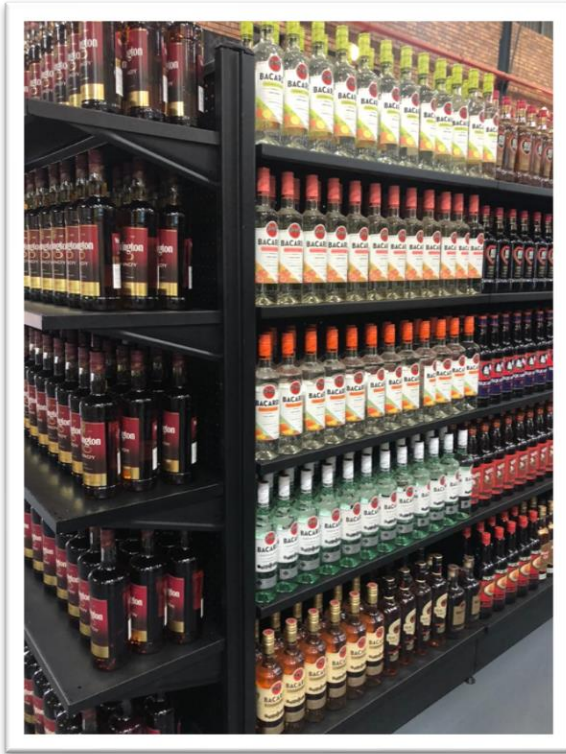
ESE Projects

Mining Equipment Supplier

Racking with a floor

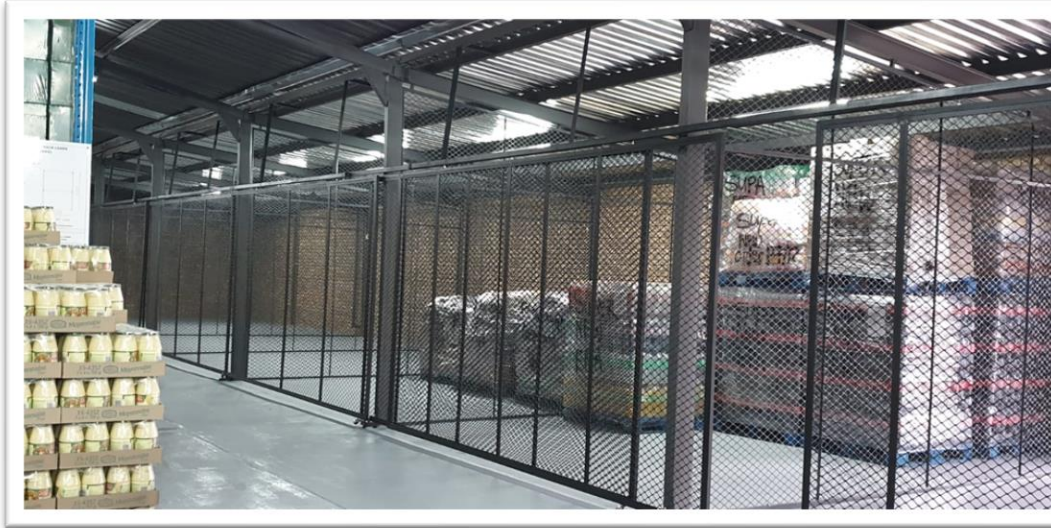


Bottle Store Gondola Shelving



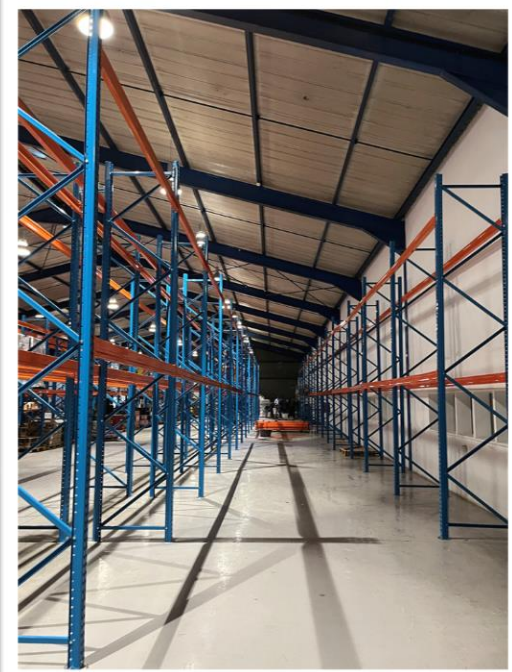
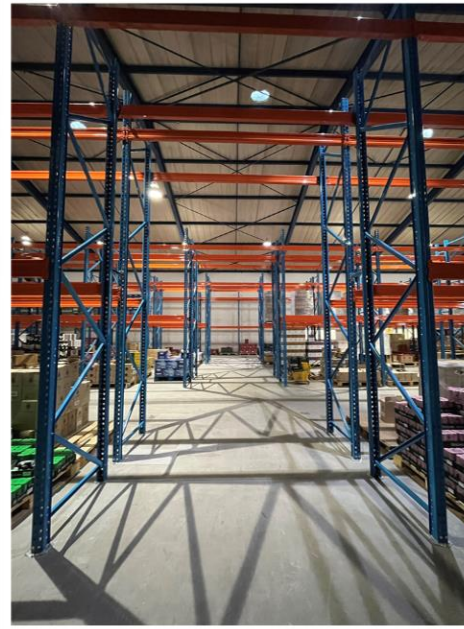
Food Wholesaler

Racking, Cages, Till Points

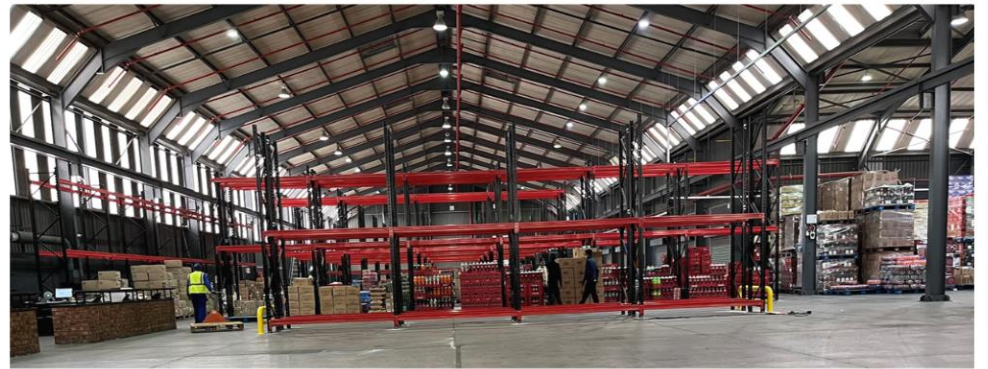
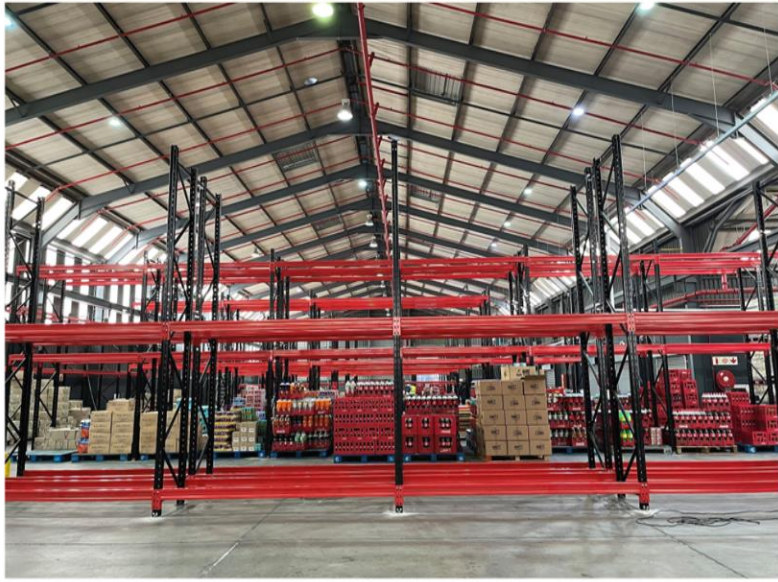


Liquor Wholesaler - Botswana

Pallet Racking

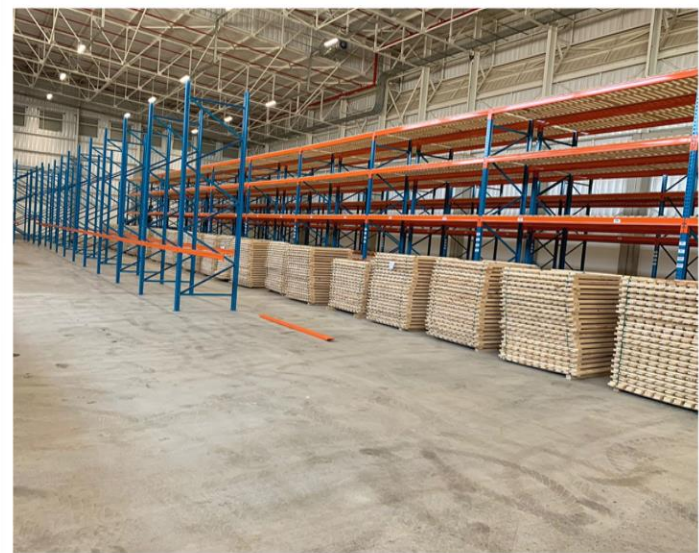
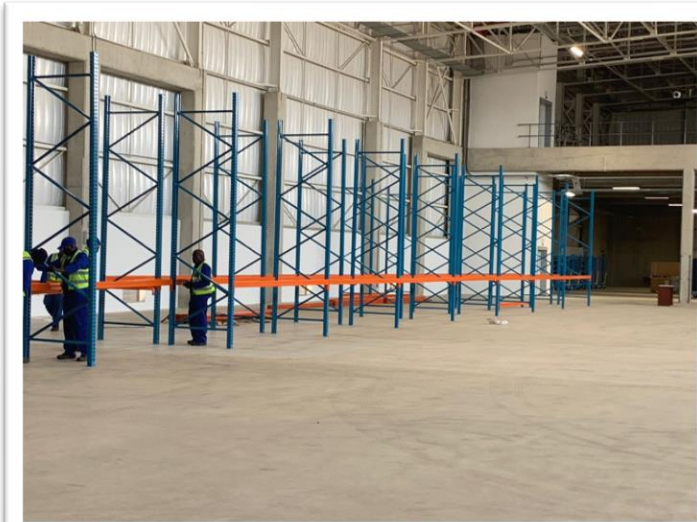


Liquor Wholesaler Pallet Racking



Autopart Manufacturer

Pallet Racking



Mining Equipment Supplier

Mini Racking



Client Testimonials

“I am very happy with the quality of the product and both you and your teams service . If I need more racking you would be the first and only one I will contact . Good service is very hard to come by these days” Len – Drilling Industry

“Thank you for all your help Stanley” Nelson – FMCG

“Thanks ESE for my racking, it will be a great space saver. You guys are the best”
Christo – Private
Garage Storage

“We would like to thank you and your team for the work done on the racking installation in Botswana
Your Team was great! Big thank you to Brandon and Dickson for the hard work and long hours.” Mark – Liquor Wholesaler



Document Management System

Apart from our Racking & Shelving Company, we also have a sister company that specializes in the document management industry. Proper Document Storage was established in 2000, and has since grown to be very successful assisting clients throughout South Africa with their document management solutions.

Our services includes;

- Offsite Storage
- Scanning & Indexing
- Retrievals & Collections
- Shredding Services
- Cardboard Boxes
- Document Racking Systems



Want to find our more about PDS

visit our website: www.pds-sa.co.za, or contact our offices 012 8004050 / 4153

Contact Information



012 800 4050 - 012 800 4153



071 607 7348



www.esa-sa.co.za



sales@esa-sa.co.za/ mindi@esa-sa.co.za



167 Lanham Street, East Lynne, PTA



P.O Box 13208, Hatfield, 0028

